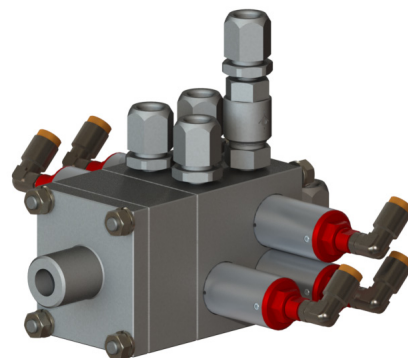


PTMIX - 2K Mixer

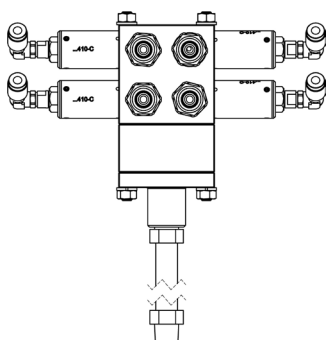
General overview

PTMIX combines a compact design and a very good efficiency. It is made in stainless steel, long lasting and very well flushable. Each component input is controlled by a pneumatic valve and enters in the block in separate channels. Union of the 2 components is done after special designed non return valves, so any contamination is avoided. PTMIX is available in different configurations : without dump valve, with dump valves on 1 or both components. Each version is moreover available with 1 flushing medium input for both sides or 2 separate flushing medium inputs.



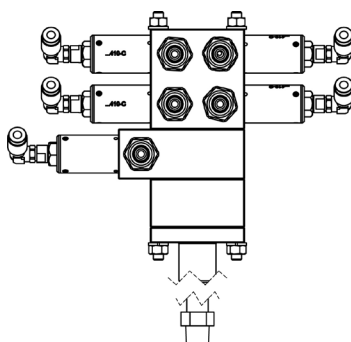
PTMIX-1

- 1 resin input
- 1 hardener input
- 1 solvent on both channels
- 1 air on resin



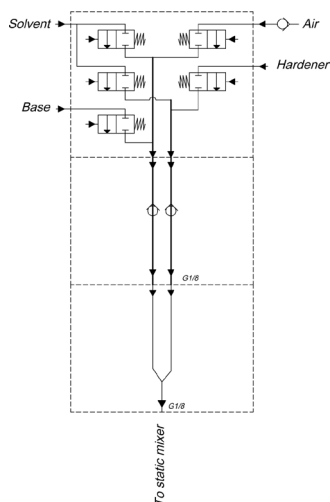
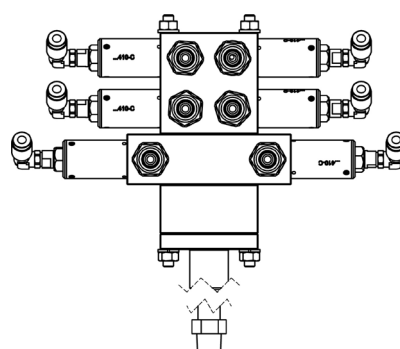
PTMIX-2

- 1 resin input
- 1 hardener input
- 1 solvent on both channels
- 1 air on resin
- 1 dump on resin



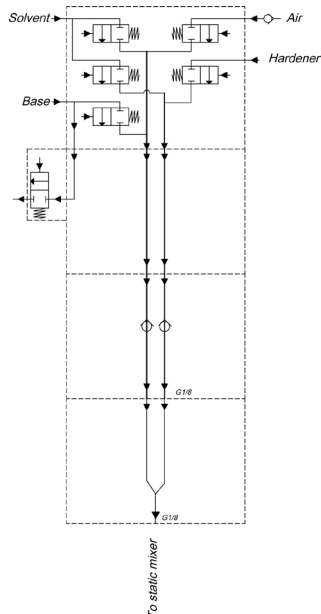
PTMIX-3

- 1 resin input
- 1 hardener input
- 1 solvent on both channels
- 1 air on resin
- 1 dump on resin
- 1 dump on hardener



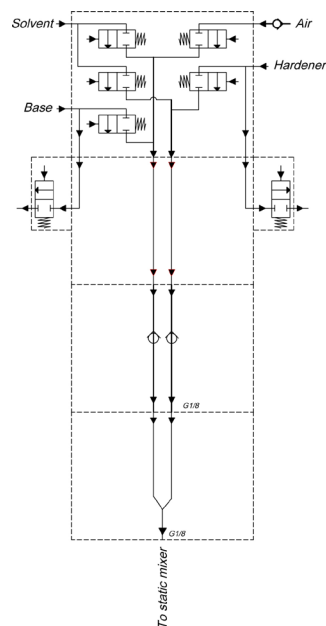
PTMIX-4

= PTMIX-1 with 2 separate solvent inputs



PTMIX-5

= PTMIX-2 with 2 separate solvent inputs



PTMIX-6

= PTMIX-3 with 2 separate solvent inputs

PTMIX - 2K Mixer

Dimensions PTMIX-1 (mm)

